

COVID-19

3295

52 ↑



Died

137

4.2%

Hospitalized

286

8.7%

CHARACTERISTICS OF COVID-19 PATIENTS
MOBILE COUNTY, ALABAMA

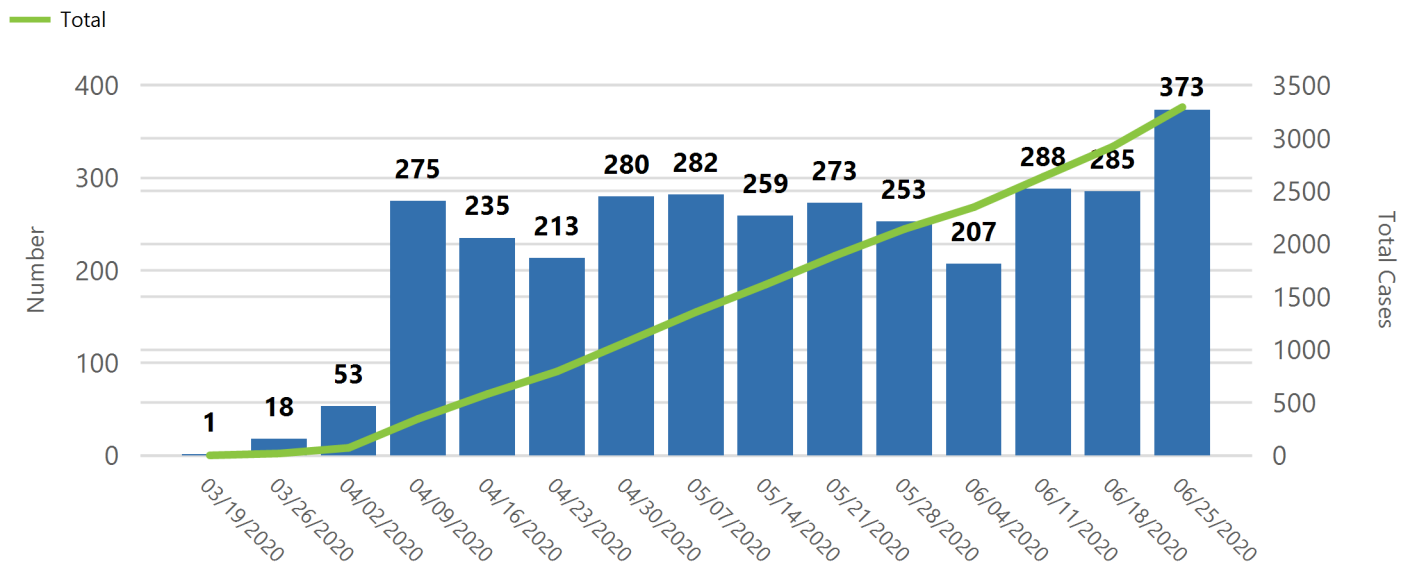
June 26, 2020

Presumed Recovered *

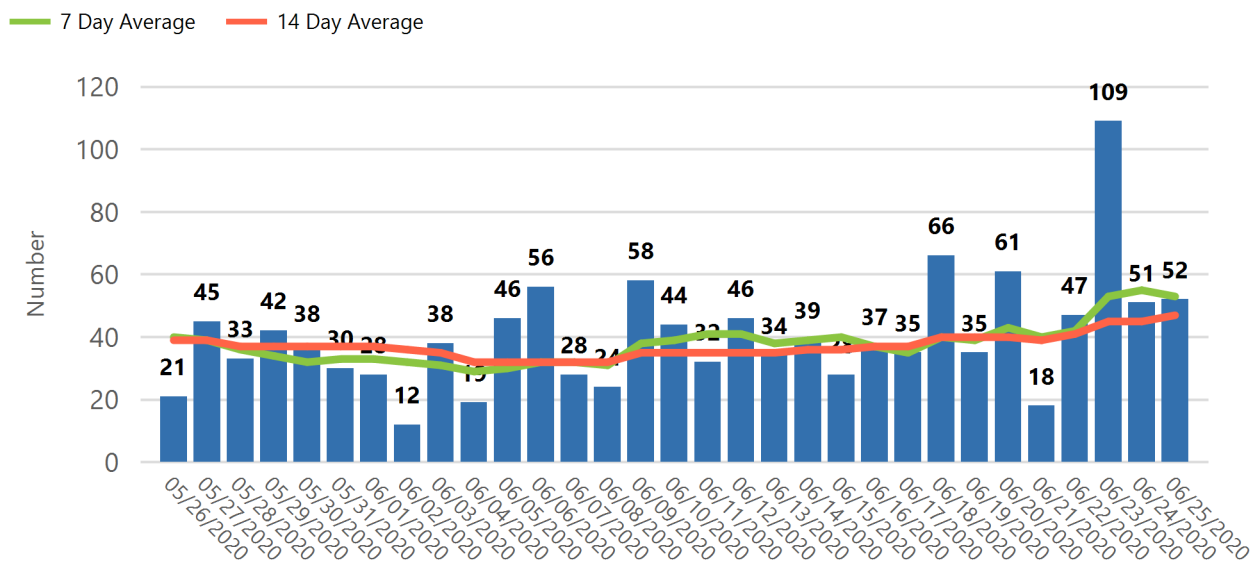
1907

57.9%

COVID-19 By Week of Report Date



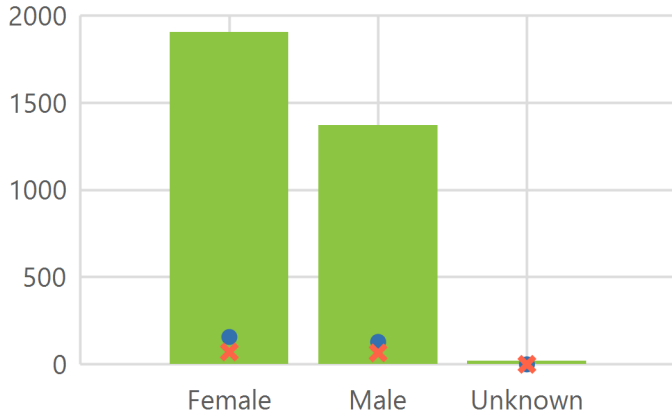
COVID-19 Reported In the Last 14 Days With 7-Day and 14-Day Moving Average



*Cases are presumed recovered if it has been 14 days or more since the case tested positive if they were not hospitalized, or if it has been 32 days or more since the case tested positive if they were hospitalized or if hospitalization was unknown. All deaths excluded.

COVID-19 By Sex

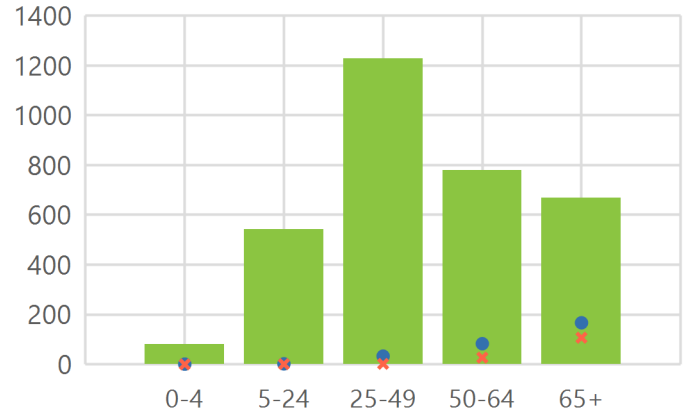
■ Total ● Hospitalized ✕ Died



Sex	Cases	Hospitalized	Died
Female	1906 (57.8%)	157 (54.9%)	71 (51.8%)
Male	1371 (41.6%)	129 (45.1%)	66 (48.2%)
Unknown	18 (0.5%)	0 (0.0%)	0 (0.0%)

COVID-19 By Age Group

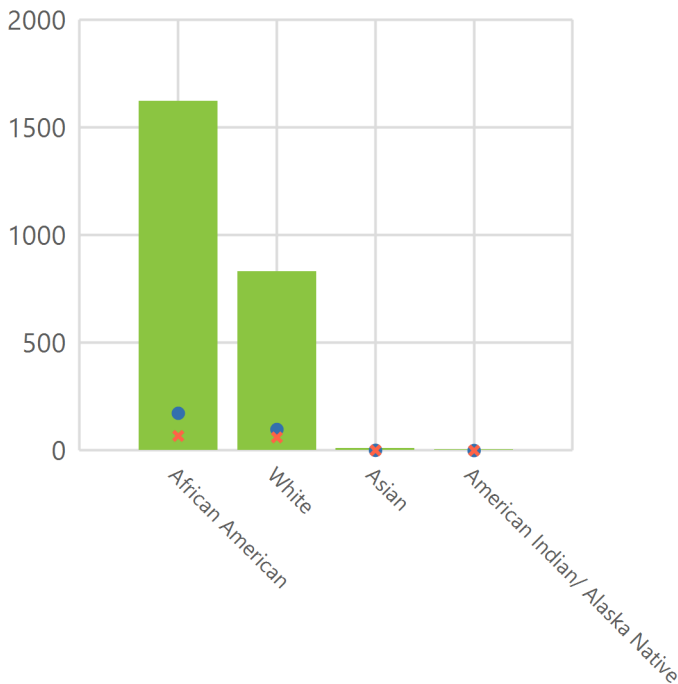
■ Total ● Hospitalized ✕ Died



Age Group	Cases	Hospitalized	Died
0-4	79 (2.4%)	1 (0.3%)	0 (0.0%)
5-24	542 (16.4%)	2 (0.7%)	1 (0.7%)
25-49	1227 (37.2%)	33 (11.5%)	2 (1.5%)
50-64	780 (23.7%)	83 (29.0%)	27 (19.7%)
65+	667 (20.2%)	167 (58.4%)	107 (78.1%)

COVID-19 By Race

■ Total ● Hospitalized ✕ Died



Race	Cases	Hospitalized	Died
African American	1622 (49.2%)	173 (60.5%)	68 (49.6%)
American Indian/Alaska Native	3 (0.1%)	0 (0.0%)	0 (0.0%)
Asian	11 (0.3%)	1 (0.3%)	1 (0.7%)
White	831 (25.2%)	98 (34.3%)	61 (44.5%)
Other/Unknown	828 (25.1%)	14 (4.9%)	7 (5.1%)